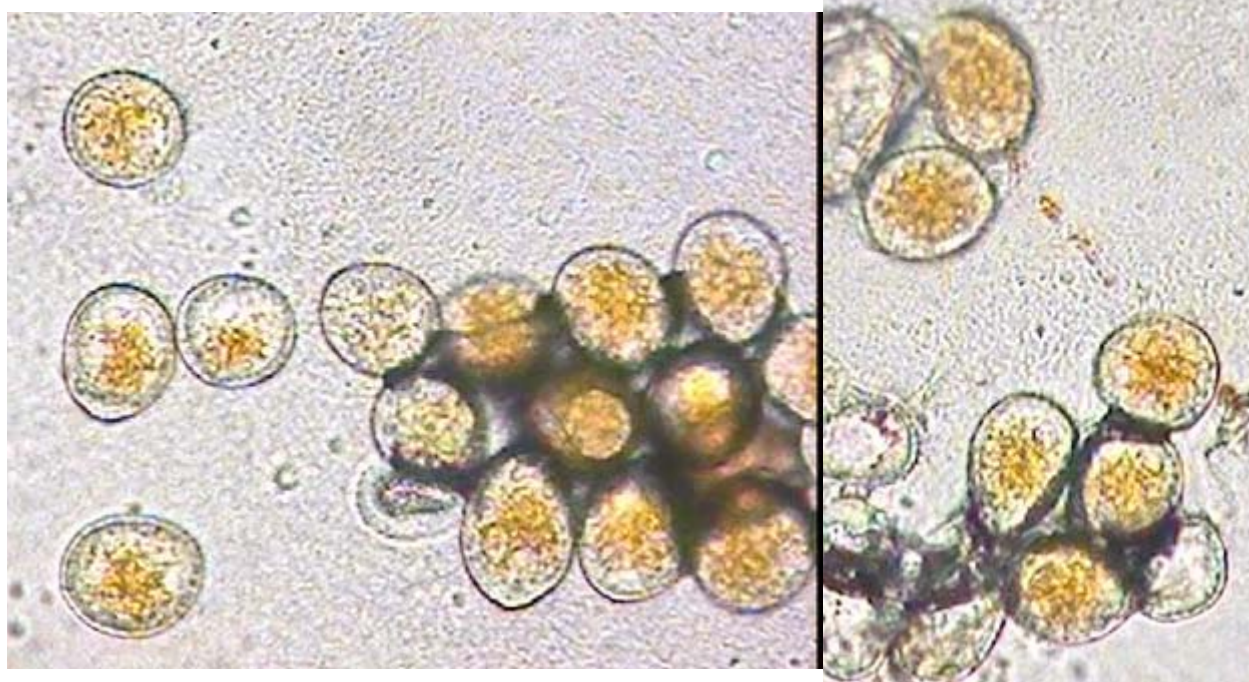




Fresh soybean rust spores collected in Seminole County, GA (Thompson Site) on volunteer soybeans from week of 15 May

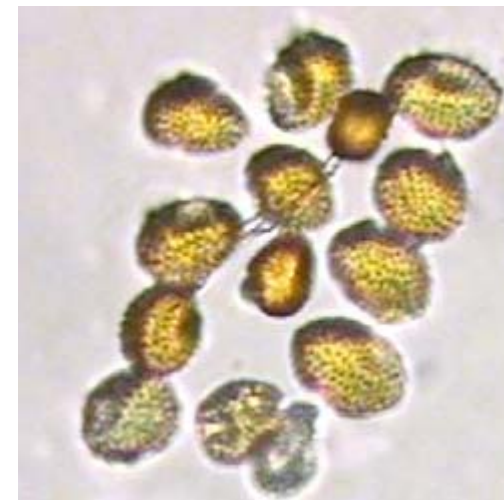


Above: Soybean rust spores from Thompson site, Seminole County, GA collected on 29 April 2005

Below: Rust spores from above after they dried overnight.



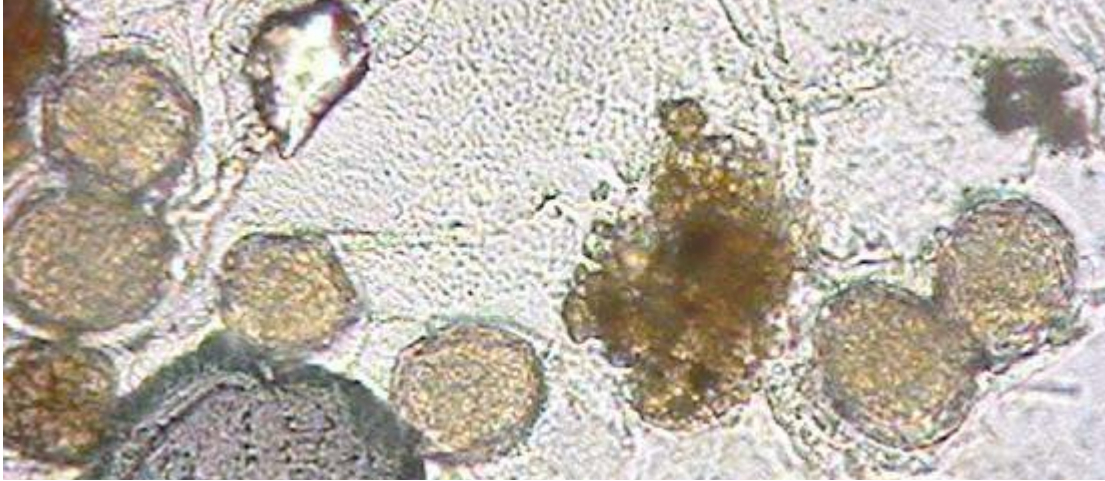
Soybean rust spores collected in Seminole County, GA on 26 May (Hanna Site).



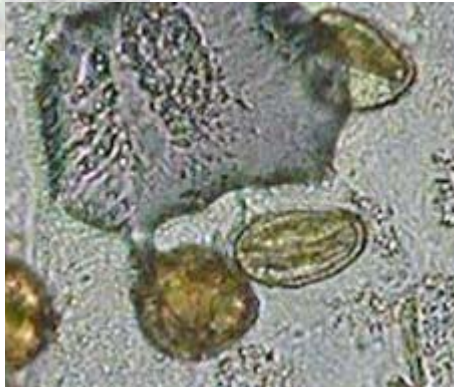
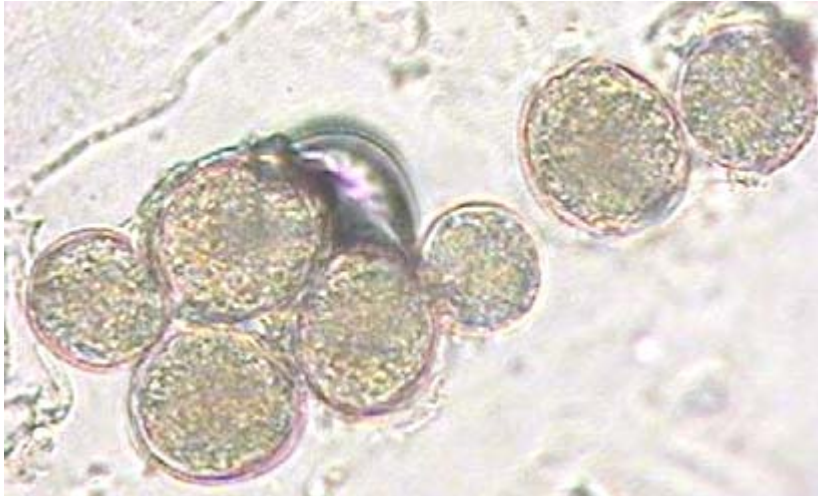
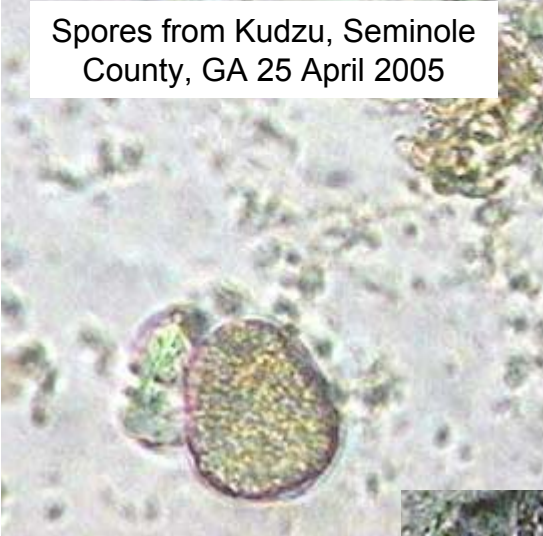
Images of Soybean Rust Spores from Seminole County, GA 2005 (400X)



Spores from Kudzu, Seminole County, GA 25 April 2005



Spores from mid-canopy of volunteer soybeans
Collected in Terrell County, GA by agent Will Duffie on 26 May



Spores from Kudzu, Seminole County, GA 10 June 2005



Images of Suspicious, Unidentified Spores from Georgia, 2005 (all 400X)



Downy Mildew on Soybean
from Sentinel Plots
in Midville, Burke Co., Georgia



Above: *Alternaria* (of course..)



Above: *Leptosphaerulina*

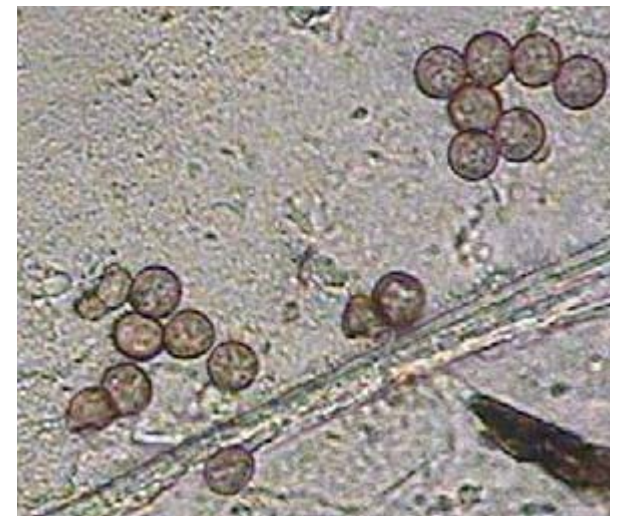


Above right: *Cercospora*



Not soybean rust,
but often found in
necrotic soybean
lesions in GA,
2005.....

Left: Mature *Epicoccum*



Right: Immature *Epicoccum*